



**PIP**

HEAD  
PROTECTION  
CATALOG

[www.pipcanada.ca](http://www.pipcanada.ca)

# A global provider of innovative safety products



Nearly 40 years ago, PIP® founders Joe Milot and Wellson Tao set out on a mission to bring the best of the world in safety products.

FOUNDED IN  
**1984**  
IN LATHAM, NY USA

WORKFORCE OF OVER  
**1500+**  
EMPLOYEES

WITH OVER  
**10K+**  
PRODUCTS AVAILABLE

HEADQUARTERS FOR  
**CANADA**  
IN LAVAL, QC

MANUFACTURING LOCATIONS  
**10**  
IN NORTH AMERICA

DISTRIBUTION CENTERS  
**1.5M** SQ  
FT  
GLOBALLY SITUATED

## Today, PIP® is a leader in safety products.

### BRANDS THAT EXTEND AROUND THE GLOBE.



## MAIN PRODUCT CATEGORIES



HAND & ARM PROTECTION



PROTECTIVE WORKWEAR



EYE & HEARING PROTECTION



FALL PROTECTION



HEAD PROTECTION



FIRST AID PRODUCTS



RESPIRATORY PROTECTION

## Preventing Head Injuries

Hard hats and safety helmets feature a protective shell and suspension system, which help attenuate impact force when struck by hard or falling objects. These are some of the most critical PPE, meeting a variety of strict industry standards.

## Safety Products You Can Trust

Over the last 10 years, PIP® has grown its product offering in personal protective equipment to deliver head-to-toe protection. Today, in addition to knit gloves and sleeves, we manufacture hard hats, face shields, ear muffs, ear plugs, fall protection, first aid, and more.



**PIP**  
**ABOVE-THE-NECK**

# KEY TO SAFETY IN HEAD PROTECTION

Because there are so many different industries and applications where head protection is required, there are multiple product categories and styles to consider. Evaluating the work environment and assessing the hazards is a crucial first step to providing proper head protection to workers.

## CSA STANDARDS

Head protection in Canada is classified by CSA standard Z94.1 as Type 1 for top of head protection or Type 2 for top and side impact protection. Both are tested for impact attenuation and penetration resistance.

CSA Z89.1

TYPE 1

CROWN IMPACT

PENETRATION  
30 joules

IMPACT ABSORPTION  
55 joules

CSA Z89.1

TYPE 2

CROWN IMPACT

PENETRATION  
30 joules

IMPACT ABSORPTION  
55 joules

SIDE IMPACT

PENETRATION  
15 joules

IMPACT ABSORPTION  
30 joules

## HEAD PROTECTION DISTINCTIONS

PIP® offers a comprehensive array of head protection that protects workers from falling objects in multiple industries and applications.

### HARD HAT

Most common form, with CSA Type 1 Class E (non-vented) as the most widely specified style.

### SAFETY HELMET

A relatively new concept, featuring an adjustable multi-point chin strap designed to keep the hard hat on the head.

### BUMP CAPS

Protect against minor incidents such as bumping into a stationary object, for use in workspaces where hard hats are not mandated.

### EXTREME PERFORMANCE

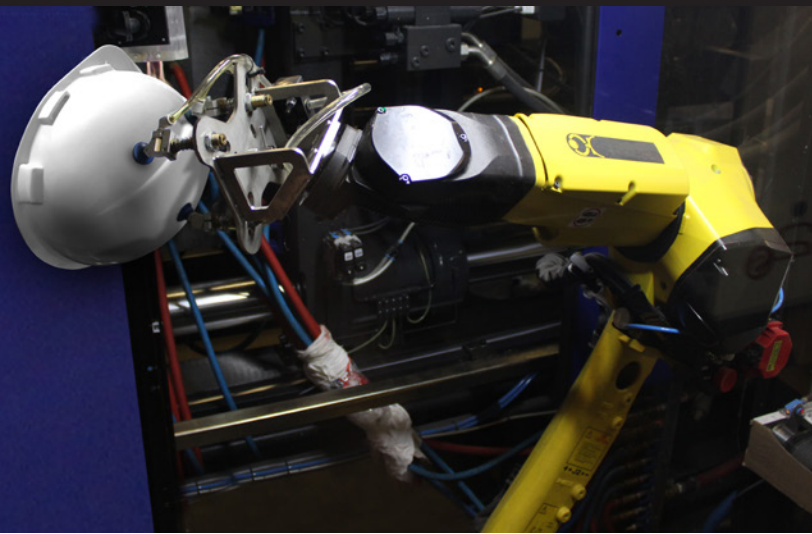
Certain shell materials are designed to protect against sustained high heat, tested for several hours to maintain comfortable temperatures for workers.



# SECOND TO NONE IN HEAD PROTECTION

## STATE-OF-THE-ART MANUFACTURING PRECISION

Dynamic® products are manufactured in Laval, Quebec in our modern facility that has the capacity to produce more than 10,000 hard hats each day to exacting quality standards.



## QUICK REFERENCE

PRODUCT FAMILY	PART NUMBER	CSA Z94.1-15 TYPE 1	CSA Z94.1-15 TYPE 2	CLASS E <i>(Non-Vented)</i>	CLASS C <i>(Vented)</i>	CLASS G	ABS/POLYCARBONATE	HDPE	NYLON RESIN	PRE-INSTALLED	HEIGHT ADJUSTMENT	6 POINT SUSPENSION	4 POINT SUSPENSION	WHEEL RATCHET	SWING WHEEL RATCHET	PIN LOCK	STANDARD BRIM	SHORT BRIM	FULL BRIM
<b>SAFETY HELMETS - WORK AT HEIGHTS</b>																			
Dynamic® Rocky™	HP141/HP142	●	●	●			●			●	●	●	●						●
<b>CAP STYLE HARD HATS - HEAVY DUTY</b>																			
Dynamic® Mont-Blanc™	HP542		●	●				●		●	●			●	●		●		
<b>CAP STYLE HARD HATS - ELEVATED HEAT AND WELDING</b>																			
Dynamic® Vesuvio™	HP851	●		●				●	●	●	●	●	●	●			●		
Dynamic® Stromboli™	HP841/HP842	●	●	●			●			●	●	●	●	●	●		●		
<b>CAP STYLE HARD HATS - GENERAL</b>																			
Dynamic® Whistler™	HP241/HP261	●		●	●			●		●	●	●	●	●			●	●	
Dynamic® Dom™	HP341	●		●				●		●	●	●	●	●	●		●	●	
<b>FULL BRIM HARD HATS - GENERAL</b>																			
Dynamic® Kilimanjaro™	HP641/HP642	●	●	●	●			●		●	●	●	●	●		●			●
Dynamic® Annapura™	HP1041	●		●			●			●	●	●	●	●		●			●



# Dynamic<sup>®</sup>

## HARD HAT COLORS

STOCK MOQ / ADD INC	MTO MOQ / ADD INC	SO MOQ / ADD INC	PRODUCT FAMILY	STYLE NUMBER	01	02	03	04	05	06	07	08	09	10	11	13	14	15	17	18	20	31	44	45	71	74	79
					White	Yellow	Orange	Dark Green	Hi-Vis Red	Light Blue	Sky Blue	Navy Blue	Gray	Beige	Black	Gold	Dark Gray	Red	Royal Blue	North Blue	Pink	Hi-Vis Orange	Hi-Vis Yellow	Lime Green	Steel Blue	Forest Green	Silver
12 / 12	48 / 12	-	Whistler™	HP241R	★	★	★	★	●	●	★	★	★	●	★	●	★	★	★	●	●	★	★	★	●	●	●
12 / 12	48 / 12	-	Whistler™	HP241	★	★	●	★	●	●	★	★	★	●	●	●	●	●	●	●	●	★	●	●	●	●	●
12 / 12	48 / 12	-	Mont-Blanc™	HP542R	★	★	★	★	●	●	★	★	★	●	★	●	●	★	★	●	●	★	★	●	●	●	●
12 / 12	48 / 12	-	Mont-Blanc™	HP542	●	●	●	●	●	●	●	●	●	●	●	●	●	●	●	●	●	●	●	●	●	●	●
12 / 12	48 / 12	-	Kilimanjaro™	HP641R	★	★	★	★	●	●	★	★	★	●	★	●	●	★	●	●	●	★	●	●	●	●	●
12 / 12	48 / 12	-	Kilimanjaro™	HP641	●	●	●	●	●	●	●	●	●	●	●	●	●	●	●	●	●	●	●	●	●	●	●
12 / 12	48 / 12	-	Kilimanjaro™	HP642R	★	★	★	★	●	●	★	★	★	●	★	●	●	★	●	●	●	●	●	●	●	●	●
12 / 12	-	96 / 12	Stromboli™	HP841R	★	★	▲	▲	—	▲	—	—	★	—	★	—	★	★	—	—	—	—	—	▲	★	▲	—
12 / 12	-	96 / 12	Stromboli™	HP841SR	▲	▲	▲	▲	—	▲	—	—	▲	—	▲	—	▲	▲	—	—	—	—	—	▲	▲	▲	—
12 / 12	-	96 / 12	Stromboli™	HP842R	★	★	★	★	—	▲	—	—	★	—	★	—	★	★	—	—	—	—	—	▲	★	▲	—
12 / 12	-	96 / 12	Annapurna™	HP1041R	★	—	—	—	—	—	—	—	—	—	★	—	—	★	—	—	—	—	—	—	★	—	—
-	48 / 12	-	Annapurna™	HP1041	●	—	—	—	—	—	—	—	—	—	●	—	—	●	—	—	—	—	—	—	●	—	—
2 / 2	-	96 / 8	Rocky™	HP141R	★	★	★	▲	—	★	—	—	★	—	★	—	▲	▲	—	—	—	—	—	▲	▲	▲	—
2 / 2	-	96 / 8	Rocky™	HP142R	★	★	★	★	—	★	—	—	★	—	★	—	▲	★	—	—	—	—	—	▲	▲	▲	—
12 / 12	-	96 / 12	Dom™	HP341R	★	★	▲	▲	▲	▲	▲	▲	★	▲	★	▲	▲	★	▲	▲	▲	▲	▲	▲	▲	▲	▲
12 / 12	-	96 / 12	Dom™	HP341	★	▲	▲	▲	▲	▲	▲	▲	▲	▲	▲	▲	▲	▲	▲	▲	▲	▲	▲	▲	▲	▲	▲
12 / 12	-	96 / 12	Dom™	HP341SR	▲	▲	▲	▲	▲	▲	▲	▲	▲	▲	▲	▲	▲	▲	▲	▲	▲	▲	▲	▲	▲	▲	▲
12 / 12	-	96 / 12	Whistler™	HP261R	▲	▲	▲	▲	▲	▲	▲	▲	▲	▲	▲	▲	▲	▲	▲	▲	▲	▲	▲	▲	▲	▲	▲
12 / 12	-	96 / 12	Whistler™	HP261	▲	▲	▲	▲	▲	▲	▲	▲	▲	▲	▲	▲	▲	▲	▲	▲	▲	▲	▲	▲	▲	▲	▲
12 / 12	-	96 / 12	Vesuvio™	HP851R	▲	▲	▲	▲	—	—	—	—	▲	—	▲	—	▲	▲	—	—	—	—	—	—	▲	—	—
20 / 20	-	100 / 20	Dynamic™	HP940	★	▲	▲	▲	▲	▲	★	▲	▲	▲	▲	▲	▲	▲	▲	▲	▲	▲	▲	▲	▲	▲	▲
16 / 16	-	-	Grand Slam II™	HP946	—	—	—	—	—	—	—	★	★	—	★	—	—	★	—	—	—	—	—	—	—	—	—

★ Stock 3 days
● Made-to-Order (MTO) up to 15 days
▲ Special Order (SO) TBC
— Not Available

**Logo(s)**  
Add 10-15 days to lead time

**Accessory Installation**  
Add 5 days to lead time

**Full Wrap Graphics**  
Add a minimum of 30 days to lead time and order minimum is 108 hats

**ALL VENTED HARD HATS** are considered as a Special Order, with Minimum Order Quantity (MOQ) of 96 and Additional Increment (ADD INC) of 12. Vented only available in same colors as non-vented.





## SAFETY HELMETS

# Working At Height



Scan it



CONSTRUCTION, INDUSTRIAL & UTILITIES

Wind Energy / Scaffolding / Telecom / Utilities



## ALL-AROUND PROTECTION

### Dynamic® Rocky™ HP142

- Super lightweight ABS/Polycarbonate shell
- Foam lateral impact protection
- ANSI/CSA Type 2; Class E

#### POPULAR COLORS



SUPER LIGHTWEIGHT  
POLYCARBONATE/ABS SHELL



INTEGRATED HIGH-DENSITY  
INNER SHELL FOAM LINER  
(HP142R MODEL ONLY)

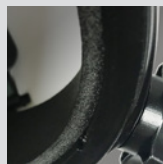


ADJUSTABLE 4-POINT  
SUSPENSION, WITH SURE-LOCK  
WHEEL RATCHET & CHIN STRAP

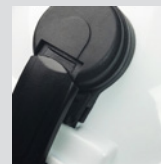
Added side  
impact protection



4-point quick-release suspension for a proper fit



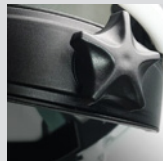
Inner padding for added comfort



Accessory slots



Double-layer textile straps for a secure fit



Sure-lock wheel ratchet for an effortless fit



Impact liner helps absorb front, side, or rear impacts

#### Dynamic® Rocky™

STYLE NUMBER	CLASS	TYPE	ANSI Z89.1	CSA Z94.1-15	SHELL MATERIAL	SUSPENSION	SIZE ADJUSTMENT	BRIM	IMPACT LINER	AVAILABLE COLORS
HP141R	Class E (NON-VENTED)	Type 1	•	•	ABS/polycarbonate	4-Point Nylon	Wheel Ratchet	Short	No	See color chart on page 5
HP142R	Class E (NON-VENTED)	Type 2	•	•	ABS/polycarbonate	4-Point Nylon	Wheel Ratchet	Short	Foam Lateral Protection	See color chart on page 5

\* View all Dynamic® color options at [pipcanada.ca](http://pipcanada.ca)



HARD HATS

# Heavy-Duty



INDUSTRIAL, CONSTRUCTION & UTILITIES

Mining / Tunneling / Demolition / Utilities / Metal Work



Scan it



## ALL-AROUND PROTECTION



**Dynamic<sup>®</sup> Mont-Blanc<sup>™</sup>**  
HP542R

- Lightweight HDPE shell
- Foam lateral impact protection
- ANSI/CSA Type 2; Class E

POPULAR COLORS



## ELEVATED HEAT PERFORMANCE



**Dynamic<sup>®</sup> Vesuvio<sup>™</sup>**  
HP851R

- Ambient heat protection up to 204°C (400°F)
- Wheel ratchet size adjustment
- ANSI/CSA Type 1; Class E

POPULAR COLORS



## TOUGH ABS/ POLYCARBONATE SHELL



**Dynamic<sup>®</sup> Stromboli<sup>™</sup>**  
HP841

- ABS/Polycarbonate shell with matte finish
- Wheel ratchet or swing ratchet adjustment
- ANSI/CSA Type 1 or 2; Class E

POPULAR COLORS



Dynamic<sup>®</sup> Mont-Blanc<sup>™</sup>

STYLE NUMBER	CLASS	TYPE	ANSI Z89.1	CSA Z94.1-15	SHELL MATERIAL	SUSPENSION	SIZE ADJUSTMENT	BRIM	OPTIONS	AVAILABLE COLORS*
HP542	Class E (NON-VENTED)	Type 2	•	•	HDPE	4-Point Nylon	Pinlock	Standard	Foam/Lateral Impact Protection	See color chart on page 5
HP542R	Class E (NON-VENTED)	Type 2	•	•	HDPE	4-Point Nylon	Wheel Ratchet	Standard	Foam/Lateral Impact Protection	See color chart on page 5
Dynamic <sup>®</sup> Vesuvio <sup>™</sup>										
HP851R	Class E (NON-VENTED)	Type 1	•		Nylon Resin	4-Point Nylon	Wheel Ratchet	Standard	Ambient heat protection up to 204°C (400°F)	See color chart on page 5
Dynamic <sup>®</sup> Stromboli <sup>™</sup>										
HP841R	Class E (NON-VENTED)	Type 1	•	•	ABS/Polycarbonate	4-Point Nylon	Wheel Ratchet	Standard	High Strength Outer Shell with Matte Finish	See color chart on page 5
HP841SR	Class E (NON-VENTED)	Type 1	•	•	ABS/Polycarbonate	4-Point Nylon	Swing Wheel Ratchet	Standard	High Strength Outer Shell with Matte Finish	See color chart on page 5
HP841RCL	Class E (NON-VENTED)	Type 1	•	•	ABS/Polycarbonate	4-Point Nylon	Wheel Ratchet	Standard	Cap-Lock Blades	See color chart on page 5
HP842R	Class E (NON-VENTED)	Type 2	•	•	ABS/Polycarbonate	4-Point Nylon	Wheel Ratchet	Standard	High Strength Outer Shell with Matte Finish	See color chart on page 5
HP842RCL	Class E (NON-VENTED)	Type 2	•	•	ABS/Polycarbonate	4-Point Nylon	Wheel Ratchet	Standard	Cap-Lock Blades	See color chart on page 5

\* View all Dynamic<sup>®</sup> color options at [pipcanada.ca](http://pipcanada.ca)



## CAP STYLE HARD HATS

# General Usage

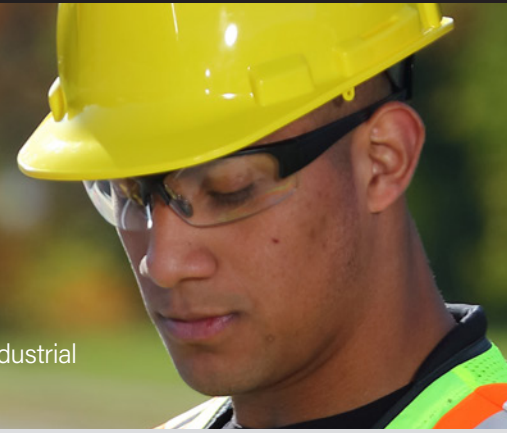


CONSTRUCTION & INDUSTRIAL

Building Construction / Roadwork / Excavation / General Industrial



Scan it



## TOP-SELLING ENGINEERED PERFORMANCE



### Dynamic® Whistler™ HP241

- Classic cap styling
- Wheel ratchet or pinlock size adjustment
- ANSI/CSA Type I; Class E or C

#### POPULAR COLORS



**1** 4-POINT QUICK RELEASE SUSPENSION  
With dual position height adjustment ensures a proper fit

**2** LIGHTWEIGHT SHELL  
Super lightweight high-density polyethylene shell minimizes fatigue

**3** SOFT SWEATBAND  
Comfortable soft foam felt lined sweatband

**4** ACCESSORY SLOTS  
Accommodate eye, face and hearing protection

**5** DOUBLE-LAYER TEXTILE STRAPS  
Strong double-layer woven nylon straps provide secure fit and superior force absorption

**6** EXTRA PADDING  
Provides added comfort and support to the nape

**7** CROWN COMFORT PAD  
Provides additional comfort Sure-Lock Wheel Ratchet only

**8** ANSI  
CERTIFIED PROTECTION  
Meets CSA Z94.1 type 1 and ANSI/ISEA Z89.1 Type 1

## Maximum force absorption without sacrificing worker comfort

Highly adjustable 4-point nylon inner suspension features a plush brow pad, comfortable crown padding and soft inside ratchet foam. 6-point suspension is also available.

Suspension is available with economical pin-lock or with our exclusive SURE-LOCK one-handed wheel ratchet adjustment that provides an easy-to-use, secure fit.







## VERSATILE PROTECTION



### Dynamic® Dom™ HP341R

- Smooth dome shape
- Wheel ratchet or swing ratchet adjustment
- ANSI/CSA Type 1; Class E

#### POPULAR COLORS



## MINER'S LAMP BRACKET INSTALLED



### Dynamic® Whistler™ HP241RMLB

- Hard hat comes with miner's lamp bracket pre-installed
- Wheel ratchet size adjustment
- ANSI/CSA Type 1; Class C

#### POPULAR COLORS



STYLE NUMBER	CLASS	TYPE	STANDARDS MET		SHELL MATERIAL	SUSPENSION	SIZE ADJUSTMENT	BRIM	OPTIONS	AVAILABLE COLORS*
			ANSI Z89.1	CSA Z94.1-15						
HP241	Class E (NON-VENTED)	Type 1	•	•	HDPE	4-Point Nylon	Pinlock	Standard	-	See color chart on page 5
HP241R	Class E (NON-VENTED)	Type 1	•	•	HDPE	4-Point Nylon	Wheel Ratchet	Standard	-	See color chart on page 5
HP241RMLB	Class C (VENTED)	Type 1	•	•	HDPE	4-Point Nylon	Wheel Ratchet	Standard	Miner Lamp Bracket	See color chart on page 5
HP241RV	Class C (VENTED)	Type 1	•	•	HDPE	4-Point Nylon	Wheel Ratchet	Standard	-	See color chart on page 5
HP261	Class E (NON-VENTED)	Type 1	•	•	HDPE	6-Point Nylon	Pinlock	Standard	-	See color chart on page 5
HP261R	Class E (NON-VENTED)	Type 1	•	•	HDPE	6-Point Nylon	Wheel Ratchet	Standard	-	See color chart on page 5
<b>Dynamic® Dom™</b>										
HP341	Class E (NON-VENTED)	Type 1	•	•	HDPE	4-Point Nylon	Pinlock	Standard	-	See color chart on page 5
HP341R	Class E (NON-VENTED)	Type 1	•	•	HDPE	4-Point Nylon	Wheel Ratchet	Standard	-	See color chart on page 5
HP341SR	Class E (NON-VENTED)	Type 1	•	•	HDPE	4-Point Nylon	Swing Wheel Ratchet	Standard	-	See color chart on page 5

\* View all Dynamic® color options at [pipcanada.ca](http://pipcanada.ca)



## FULL BRIM HARD HATS

# General



Scan it



### CONSTRUCTION & INDUSTRIAL

Added protection from the elements



## ENGINEERED PERFORMANCE



### Dynamic<sup>®</sup> Kilimanjaro™ HP641

- Sleek and attractive HDPE shell
- Wheel ratchet size adjustment
- 4-point suspension system
- ANSI/CSA Type 1; Class E or C

#### POPULAR COLORS



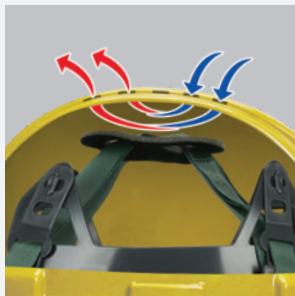
## WIDE PROFILE DESIGN



### Dynamic<sup>®</sup> Annapurna™ HP1041R

- Lightweight polycarbonate / ABS shell with matte finish
- Wheel ratchet size adjustment
- 4-point suspension
- ANSI/CSA Type 1; Class E

#### POPULAR COLORS



## Vented shell

Optional vents along the crown of the hard hat provides better comfort and cooling.



## Longer back brim

Helps protect neck and ears from the sun's UV rays and functions as a run-off for rain and snow.

### Dynamic<sup>®</sup> Annapurna™

#### STANDARDS MET

STYLE NUMBER	CLASS	TYPE	ANSI Z89.1	CSA Z94.1-15	SHELL MATERIAL	SUSPENSION	SIZE ADJUSTMENT	BRIM	OPTIONS	AVAILABLE COLORS*
HP1041R	Class E (NON-VENTED)	Type 1	•	•	ABS/Polycarbonate	4-Point Nylon	Wheel Ratchet	Full Brim	-	See color chart on page 5
HP1041RMLB	Class E (NON-VENTED)	Type 1	•	•	ABS/Polycarbonate	4-Point Nylon	Wheel Ratchet	Full Brim	Miner Lamp Bracket	See color chart on page 5

### Dynamic<sup>®</sup> Kilimanjaro™

HP641	Class E (NON-VENTED)	Type 1	•	•	HDPE	4-Point Nylon	Pinlock	Full Brim	-	See color chart on page 5
HP641R	Class E (NON-VENTED)	Type 1	•	•	HDPE	4-Point Nylon	Wheel Ratchet	Full Brim	-	See color chart on page 5
HP641RMLB	Class E (NON-VENTED)	Type 1	•	•	HDPE	4-Point Nylon	Wheel Ratchet	Full Brim	Miner Lamp Bracket	See color chart on page 5
HP641RV	Class C (VENTED)	Type 1	•	•	HDPE	4-Point Nylon	Wheel Ratchet	Full Brim	-	See color chart on page 5
HP642R	Class E (NON-VENTED)	Type 2	•	•	HDPE	4-Point Nylon	Wheel Ratchet	Full Brim	-	See color chart on page 5
HP642RMLB	Class E (NON-VENTED)	Type 2	•	•	HDPE	4-Point Nylon	Wheel Ratchet	Full Brim	Miner Lamp Bracket	See color chart on page 5

\*View all Dynamic<sup>®</sup> color options at [pipcanada.ca](http://pipcanada.ca)

BUMP CAPS

# Incidental Contact



Scan it



USE IN WORK SPACES WHERE  
HARD HATS ARE NOT MANDATED

Assembly Line / Maintenance / Aviation / Automotive



## EXCELLENT COMFORT AND FIT

### JSP® HardCap Aerolite™ Bump Cap

- Lightweight and cool, weighs less than 5 oz.
- Sleek low profile baseball cap design
- HDPE liner provides all around protection
- Unique size adjuster provides a quick, secure fit



▲ **SHORT BRIM - 2"**  
HP282AES150



▲ **MICRO BRIM - 1"**  
HP282AEM130



### Dynamic® Grand Slam™ HP946

- Ideal for low hazard areas for protection against bumps and lacerations
- Interior shell with crown padding for comfort and fit
- Lightweight and well ventilated
- Adjustable sizing to fit most head sizes



### Dynamic® Bump Cap HP940

- Lightweight ventilated HDPE shell
- 4-point pinlock suspension

POPULAR COLORS



## LED CAP LIGHT



### HP946LED

- Our popular HP946 model, with LED lights installed on the front brim
- Includes 5 high-power white LEDs that are unbreakable
- Batteries included*

### Bump Caps

STYLE NUMBER	BRIM	AVAILABLE COLORS
HP940	Micro - 1.25"	See color chart on page 5
HP282AES150	Short - 2"	Black, Navy
HP282AEM130	Micro - 1"	Black, Navy
HP946	Regular - 2.75"	See color chart on page 5
HP946LED	Regular - 2.75"	See color chart on page 5





Scan it

# Accessories & Replacement Parts



HPSLH

### Rocky™ Lamp/Goggle Clip

- 4 clips per pack
- Holds the lamp strap in place

- Compatible with Dynamic® Rocky™ and most styles of hard hats



HP241C

2-point, elastic with plastic hooks

### Chin Straps

- Made to hold the hard hat on the head of the user
- 10 per pack



HP542C

4-point, elastic with plastic hooks

- Adjustable



HP142RS

### Replacement Suspension

- Fits Dynamic® HP142R



HP641RS

### Replacement Suspension

- Fits Dynamic® HP241R, HP341R, HP641R, HP841R, HP851R, HP1041R



HP142FM

### Replacement Foam Liner

- Fits Dynamic® HP142R



HP542FM

### Replacement Foam Liner

- Fits Dynamic® HP542, HP542R, HP642R, HP842R, HP842SR



HP1X4

### Dyna-Brite™ Reflective Strips

- For Dynamic® hard hats
- Available in white, yellow and orange
- 16 strips per pack



HPHH1

### Dyna-Lite™ Reflective Strips with Rafters

- For Dynamic® hard hats
- Available in gray/red and gray/green
- 3 strips per pack



HPSS84

### Dyna-Lite™ Reflective Strips

- For Dynamic® hard hats
- Available in gray
- Multiple options available

STYLE NUMBER	DESCRIPTION
HPSLH	Rocky™ Lamp/Goggle Clip
HP241C	Chin Strap 2-Point
HP542C	Chin Strap 4-Point
HP142RS	Dynamic® Replacement Suspension for HP142R
HP641RS	Dynamic® Replacement Suspension for HP241R, HP341R, HP641R, HP841R, HP851R, HP1041R
HP542RS	Dynamic® Replacement Suspension for HP542R, HP642R, HP842R
HP542S	Dynamic® Replacement Suspension for HP542
HP641S	Dynamic® Replacement Suspension for HP241, HP341, HP641, HP1041
HP661CS	Comfort Conversion Strap for HP261, HP261R
HP661S	Dynamic® Replacement Suspension for HP261
HP661RS	Dynamic® Replacement Suspension for HP261R
HP841SRS	Dynamic® Replacement Suspension for HP341SR, HP841SR
HPSB241	Replacement Felt Sweatband
HPSB841	Replacement Velcro® Sweatband
HP142FM	Replacement Foam Liner for HP142R
HP542FM	Replacement Foam Liner for HP542, HP542R, HP642R, HP842R, HP842SR
HP1X4-01	Dyna-Brite™ Reflective Kits - White
HP1X4-02	Dyna-Brite™ Reflective Kits - Yellow
HP1X4-03	Dyna-Brite™ Reflective Kits - Orange
HPHH1RD	Dyna-Lite™ 3 Pack Reflective Strips with Rafters - Gray and Red
HPHH1GN	Dyna-Lite™ 3 Pack Reflective Strips with Rafters - Gray and Green
HPSS8	Dyna-Lite™ Single Reflective Strip - Gray
HPSS24	Dyna-Lite™ Wraparound Reflective Strip - Gray
HPSS83	Dyna-Lite™ 3 Pack Reflective Strip - Gray
HPSS84	Dyna-Lite™ Reflective Strip Kit - Gray
HPSS85	Dyna-Lite™ Deluxe Reflective Strip Kit - Gray



Scan it

# Winter Caps & Liners

## DYNAMIC® WINTER LINERS

- Made from quality materials
- Designed to keep the wearer warm and comfortable to help protect against cold stress
- Fits the head snugly and is compatible with both regular or wide brim hard hats



▲ HPWL1



▲ HPWL2



▲ HPWL3

STYLE NUMBER	TYPE	COLOR	MATERIAL	FR
HPWL1	Hard Hat Winter Liner	Black	Nylon/Cotton	No
HPWL2	Sock Type Winter Liner	Red	Stretch Nylon	No
HPWL3	Hard Hat Winter Liner w/ Face Warmer	Royal Blue	Cotton	Yes
HPWL4	Thermal Face Protector	Black	Acrylic	No
HPWL5	Balaclava	Black	Acrylic	No
HPWL6	Snug Fit Tuque	Black	Acrylic	No



▲ HPWL4



▲ HPWL5



▲ HPWL6

## PIP® WINTER BEANNIE CAP

- Knit polyester cap
- Silver reflective piping for enhanced visibility
- One size fits most
- Non-FR

STYLE NUMBER	TYPE	COLOR
HP360BEANNIEOR	Winter Beannie Cap	Hi-Vis Orange
HP360BEANNIELY	Winter Beannie Cap	Hi-Vis Yellow



▲ HP360BEANNIELY



▲ HP360BEANNIEOR

## PIP® 3-IN-1 BALACLAVA

- Polyester fleece winter liner with drawstring tightening for universal adjustment
- Shoulder length wraps around to front and can be tucked into jacket
- Warm polyester fleece outer layer
- Ideal for use in cold weather work conditions such as construction, wood work, refineries, oil drilling, maintenance, mining, etc.

STYLE NUMBER	TYPE	COLOR
HP3641170	Extended Adjustable 3-in-1 Balaclava	Black

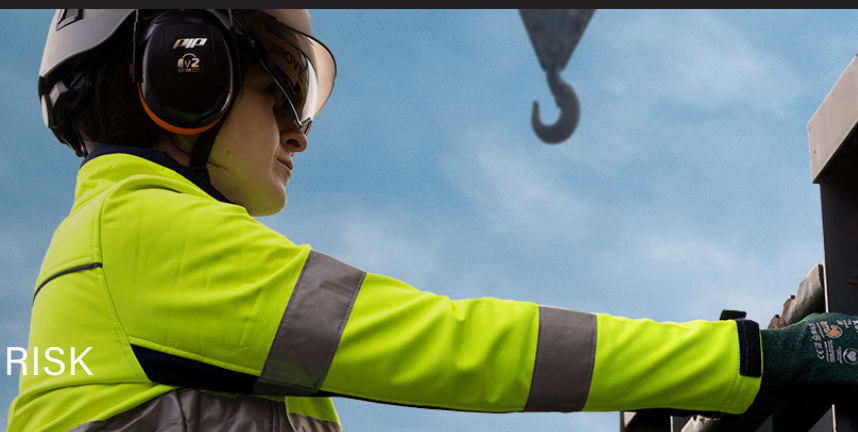


▲ HP3641170



# INTEGRATED Ear Muffs

FOR JOBS WHERE HEARING IS AT RISK



## CAP STYLE HARD HAT MOUNT

**23**  
NRR



**V1™**  
**Cap Style**  
263-V1CM

- Dielectric headband reduces electrical hazards
- Smooth telescopic height adjustment for optimized comfort and seal
- Universal attachment slots

**24**  
NRR



**V2™**  
**Cap Style**  
263-V2CM

- Dielectric headband reduces electrical hazards
- Smooth telescopic height adjustment for optimized comfort and seal
- Universal attachment slots

**26**  
NRR



**V3™**  
**Cap Style**  
263-V3CM

- Dielectric headband reduces electrical hazards
- Smooth telescopic height adjustment for optimized comfort and seal
- Universal attachment slots

## FULL BRIM HARD HAT MOUNT

**23**  
NRR



**V1™**  
**Full Brim**  
263-V1FB

- Dielectric headband reduces electrical hazards
- Smooth telescopic height adjustment for optimized comfort and seal
- Universal attachment slots

**25**  
NRR



**V2™**  
**Full Brim**  
263-V2FB

- Dielectric headband reduces electrical hazards
- Smooth telescopic height adjustment for optimized comfort and seal
- Universal attachment slots

**27**  
NRR



**V3™**  
**Full Brim**  
263-V3FB

- Dielectric headband reduces electrical hazards
- Smooth telescopic height adjustment for optimized comfort and seal
- Universal attachment slots

STYLE NUMBER	NRR	TYPE	DIELECTRIC	SIZE ADJUSTMENT	COLOR
263-V1CM	23	Cap Style	Yes	Telescopic	Neon Green
263-V2CM	24	Cap Style	Yes	Telescopic	Neon Orange
263-V3CM	26	Cap Style	Yes	Telescopic	Neon Red
263-V1FB	23	Full Brim	Yes	Telescopic	Neon Green
263-V2FB	25	Full Brim	Yes	Telescopic	Neon Orange
263-V3FB	27	Full Brim	Yes	Telescopic	Neon Red





Scan it

# Industrial, Forestry and Gardening Kits

EYE, FACE, HEARING, AND HEAD PROTECTION



**Deluxe Forestry and Gardening Kit**  
NPK10

- (1) HP542R03 Mont-Blanc™ class 2 orange hard hat
- (1) EPB101 plastic faceshield bracket
- (1) EPWM815 metal forestry screen visor
- (1) NP118 B52™ earmuff



**Quality Forestry and Gardening Kit**  
NPK11

- (1) HP241R02 Whistler™ class 1 yellow hard hat
- (1) EPB101 plastic faceshield bracket
- (1) EPWM815 metal forestry screen visor
- (1) NP116 Mirage™ earmuff



**Good Gardening Kit**  
NPK12

- (1) HP24104 Whistler™ class 1 dark green hard hat
- (1) EPB101 plastic faceshield bracket
- (1) EPWM815 metal forestry screen visor
- (1) NP112 Spitfire™ earmuff



**Industrial Kit**  
NPK13

- (1) HP241R02 Whistler™ class 1 yellow hard hat
- (1) EPB101 plastic faceshield bracket
- (1) EP815/40 PETG clear faceshield
- (1) NP116 Mirage™ earmuff



**Deluxe Forestry and Gardening Kit**  
NPK14

- (1) HP142R15 Rocky™ class 2 red safety helmet
- (1) EPB103 faceshield bracket
- (1) EPWM815 metal forestry screen visor
- (1) NP118 B52™ earmuff



**Quality Forestry and Gardening Kit**  
NPK15

- (1) HP241R03 Whistler™ class 1 orange hard hat
- (1) EPB101 plastic faceshield bracket
- (1) EPWM815 metal forestry screen visor
- (1) NP116 Mirage™ earmuff



**Good Gardening Kit**  
NPK16

- (1) HP24103 Whistler™ class 1 orange hard hat
- (1) EPB101 plastic faceshield bracket
- (1) EPWM815 metal forestry screen visor
- (1) NP112 Spitfire™ earmuff

Designed for use in forestry, gardening and industrial applications



Scan it

# Faceshields, Brackets & Visors

## HIGH PERFORMANCE FACESHIELD BRACKETS



**EPB101**

- Compatible with cap style hard hats
- Accepts a wide range of faceshield styles and earmuffs
- Lightweight plastic, dielectric
- Swivel system to raise or lower faceshield



**EPB101EB**

- Compatible with cap style hard hats
- Accepts a wide range of faceshield styles and earmuffs
- Swivel system to raise or lower faceshield



**EPB101EBD**

- Compatible with cap style hard hats
- Accepts a wide range of faceshield styles
- Integrated gasket to protect from airborne dust and debris
- Swivel system to raise or lower faceshield



**EPB101VD**

- Compatible with cap style hard hats
- Accepts a wide range of faceshield styles
- Integrated gasket to protect from airborne dust and debris
- Swivel system to raise or lower faceshield
- Lightweight plastic, dielectric



**EPB102**

- Compatible with cap style hard hats
- Accepts a wide range of faceshield styles and earmuffs
- Lightweight plastic, dielectric
- Swivel system to raise or lower faceshield



**EPB103**

- Compatible with Dynamic® Rocky™
- Accepts a wide range of faceshield styles and earmuffs
- Lightweight plastic, dielectric
- Swivel system to raise or lower faceshield



**EPB201**

- Compatible with cap style hard hats
- Accepts a wide range of faceshield styles
- Lightweight aluminum, heat resistant
- Swivel system to raise or lower faceshield



**EPB201VD**

- Compatible with cap style hard hats
- Accepts a wide range of faceshield styles
- Integrated gasket to protect from airborne dust and debris
- Lightweight aluminum, heat resistant
- Swivel system to raise or lower faceshield



**EPB301**

- Compatible with full brim hard hats
- Accepts a wide range of faceshield styles
- Lightweight aluminum, heat resistant
- Swivel system to raise or lower faceshield



**EPB940**

- Compatible with Dynamic® bump caps
- Compatible with most visors in the market
- Lightweight plastic, dielectric
- Swivel system to raise and lower the visor with two parking positions

STYLE NUMBER	MATERIAL	FITS	DIELECTRIC	INTEGRATED GASKET	OPTION
EPB101	Plastic	Cap Style	Yes	No	Cap Lock Blades
EPB101EB	Plastic	Cap Style	No	No	-
EPB101EBD	Plastic	Cap Style	No	Yes	-
EPB101VD	Plastic	Cap Style	Yes	Yes	-
EPB102	Plastic	Full Brim Hard hats	Yes	No	Cap Lock Blades
EPB103	Plastic	Dynamic® Rocky™	Yes	No	Cap Lock Blades
EPB201	Aluminum	Cap Style	No	No	Cam-Lock System
EPB201VD	Aluminum	Cap Style	No	Yes	Cam-Lock System
EPB301	Aluminum	Full Brim Hard hats	No	No	Cam-Lock System
EPB940	Plastic	Dynamic® Bump Cap	Yes	No	-



## HIGH PERFORMANCE CAP MOUNTED HEADGEARS



EPHG401R

- Accepts a wide range of faceshield styles
- Large sparkguard provides excellent protection
- Includes 1 EPHC01 Cap Lock kit complete with blades for slotted cap
- Full floating mount sparkguard provides comfortable wear even with heavy faceshield and continuous use



EPHGC500

- To use with all type of headgear
- Fits on faceshields that include chin guard attachment points
- Made of Noryl, a very tough material which is resistant to sparks and heat

### Headgears

STYLE NUMBER	MATERIAL	USE	FACE SHIELD CROWN
EPHG401R	Noryl	Sparks / High Heat	4"
EPHG701R	Noryl	Sparks / High Heat	7"
Chin Protector			
EPHGC500	Noryl	Sparks / High Heat	-

## HIGH PERFORMANCE FACESHIELD VISORS



EP815



EP816



EP1015PG

### FEATURES

- Universal fit compatible with a wide variety of headgear and brackets
- PETG material is suitable for general grinding and liquid splash applications
- Polycarbonate material is suitable for high heat, impact resistance, and general grinding
- Available in green tint to help lessen eyestrain



EP815



EP919PG

STYLE NUMBER	SIZE	MATERIAL	COLOR	THICKNESS
EP615/40	6" x 15.5"	PETG	Clear	0.040 in /1.0 mm
EP815/40	8" x 15.5"	PETG	Clear	0.040 in /1.0 mm
EP815/60	8" x 15.5"	PETG	Clear	0.060 in /1.5 mm
EP815P/40	8" x 15.5"	Polycarbonate	Clear	0.040 in /1.0 mm
EP815PG/40	8" x 15.5"	Polycarbonate	Green	0.040 in /1.0 mm
EP815P/60	8" x 15.5"	Polycarbonate	Clear	0.060 in /1.5 mm
EP1015/40	10" x 15.5"	PETG	Clear	0.040 in /1.0 mm
EP1015/60	10" x 15.5"	PETG	Clear	0.060 in /1.5 mm
EP1015P/40	10" x 15.5"	Polycarbonate	Clear	0.040 in /1.0 mm
EP1015PG/40	10" x 15.5"	Polycarbonate	Green	0.040 in /1.0 mm
EP1015P/60	10" x 15.5"	Polycarbonate	Clear	0.060 in /1.5 mm
EP816/40	8" x 16.5"	PETG	Clear	0.040 in /1.0 mm
EP816/60	8" x 16.5"	PETG	Clear	0.060 in /1.5 mm
EP816P/40	8" x 16.5"	Polycarbonate	Clear	0.040 in /1.0 mm
EP816P/60	8" x 16.5"	Polycarbonate	Clear	0.060 in /1.5 mm
EP919/40	9.5" x 20"	PETG	Clear	0.040 in /1.0 mm
EP919/60	9.5" x 20"	PETG	Clear	0.060 in /1.5 mm
EP919P/40	9.5" x 20"	Polycarbonate	Clear	0.040 in /1.0 mm
EP919PG/40	9.5" x 20"	Polycarbonate	Green	0.040 in /1.0 mm
EP919P/60	9.5" x 20"	Polycarbonate	Clear	0.060 in /1.5 mm





# Custom Imprinting

FAST. DEPENDABLE. QUALITY PRINTING.



Custom imprinting is available on most hard hats, whose large print surfaces allow for logos on the front, sides and back.

WE USE THE MOST ADVANCED TECHNIQUE AND QUALITY INK THAT ENSURES YOUR LOGO POPS AND WILL NOT WEAR OFF. IT'S NOT JUST OUR IMAGE - IT'S YOURS TOO.



EXPERIENCE

## THE DIFFERENCE

**FAST, EASY AND PRECISE.** If you don't associate these words with your custom order requests, you're not taking advantage of PIP's logo and imprinting services. With exceptionally quick turnaround times and high-quality results, PIP® delivers the value-added service you and your customers expect. Put us to the test on your next logo print order and experience the difference.

### INDUSTRY-LEADING TURNAROUND TIME



### STATE-OF-THE-ART FACTORY

- > Quick turnaround
- > Low minimums
- > Ordering software backed by a specialized core team



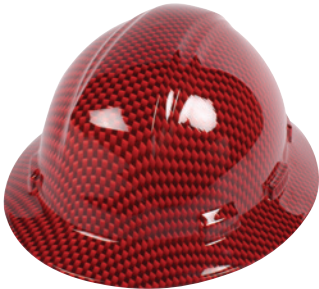
### MORE THAN 40% OF COMMON PPE IS BRANDED

- > Builds brand presence
- > Promotes security on job sites
- > Reduces equipment misplacement and loss



# Full Graphic Hard Hats

Take your custom imprinting to the next level with Dynamic® full graphic hard hats. Popular models are available as stocked items, and we also offer the opportunity to create fully personalized custom designs. Excellent as a unique corporate gift for your employees or to celebrate a special occasion.



HP641RCAR / HP642RCAR



HP341RCAR / HP841RCAR / HP842RCAR



HP341RCAN / HP841RCAN / HP842RCAN



HP341RQUE2 / HP841RQUE2 / HP842RQUE2



HP341RUS3 / HP841RUS3 / HP842RUS3



HP241RMPL



HP641RMPL / HP642RMPL



HP341RCAM / HP841RCAM / HP842RCAM

FOR OUR COMPLETE LINE  
OF SAFETY PRODUCTS  
GO TO [WWW.PIPCANADA.CA](http://WWW.PIPCANADA.CA)



HAND & ARM  
PROTECTION



PROTECTIVE  
WORKWEAR



EYE & HEARING  
PROTECTION



FOOT  
PROTECTION



HEAD  
PROTECTION



RESPIRATORY  
PROTECTION



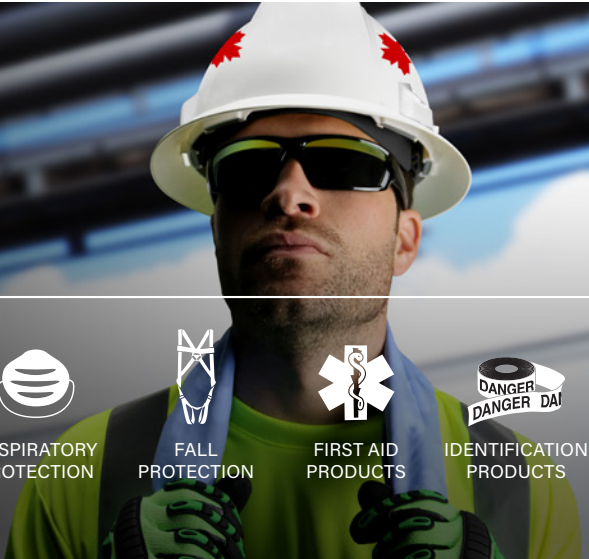
FALL  
PROTECTION



FIRST AID  
PRODUCTS



IDENTIFICATION  
PRODUCTS





**PIP Canada Ltd.**

450-687-7374 | 877-446-3278

orders@pipcanada.ca | [www.pipcanada.ca](http://www.pipcanada.ca)